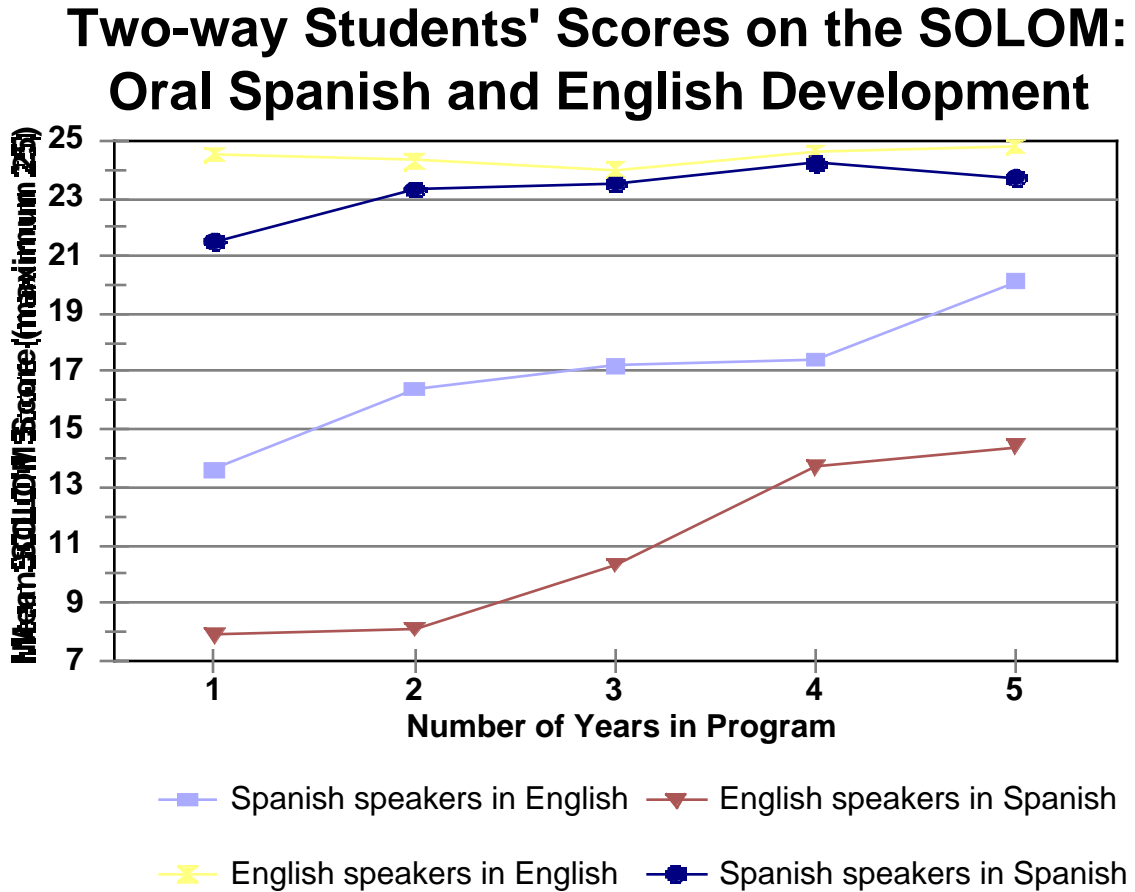


Northwest U.S. Inner City Research Site — Figures

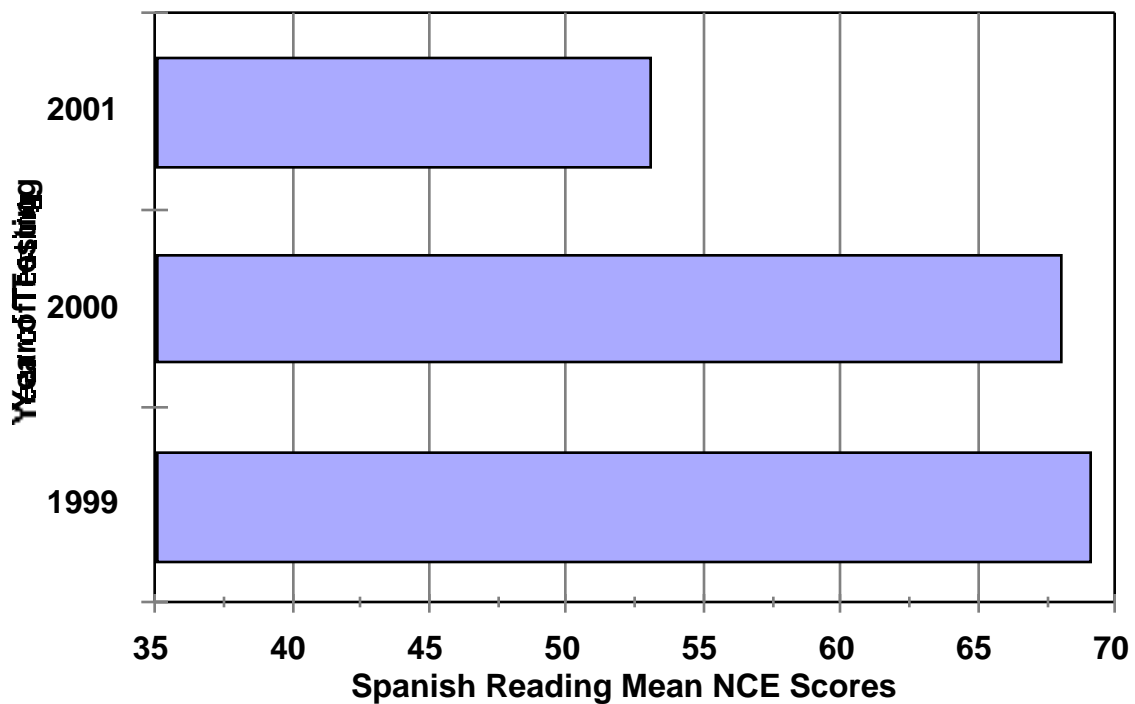
Figure D-1
Quasi-longitudinal analyses



(See Tables D-1 and D-2 for number of students by primary language and by number of years in program)

Figure D-2
Cross-sectional analyses

Spanish-speaking Students' NCE Scores on the Reading Subtest of the SABE

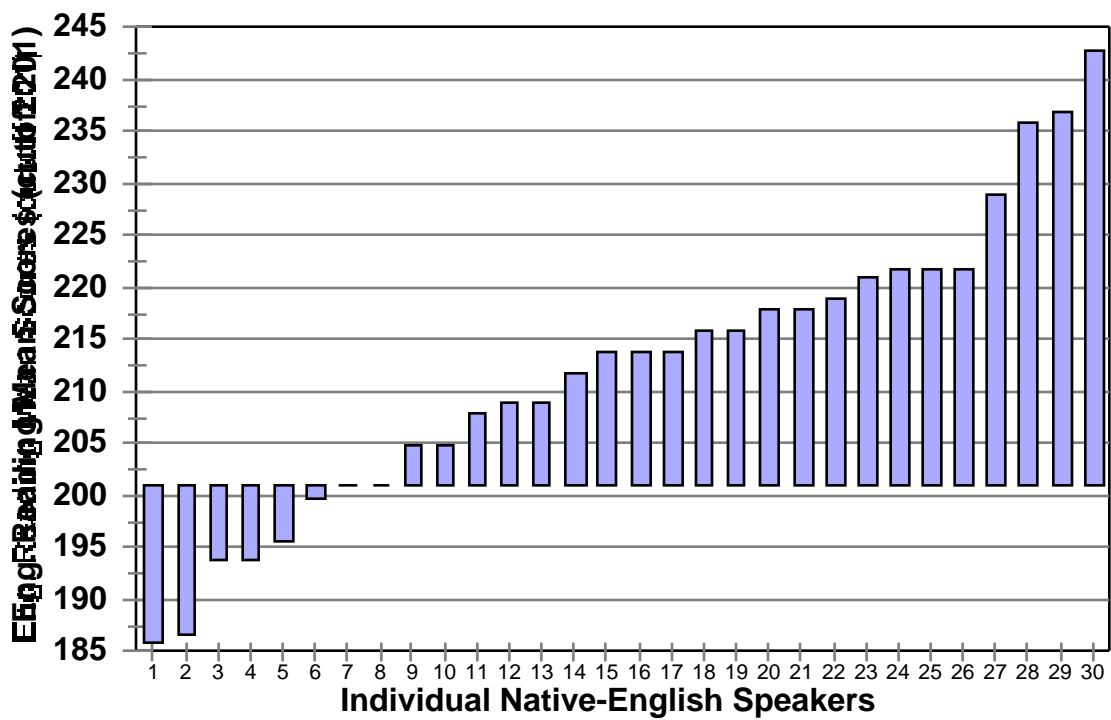


Recent-arriving Spanish-speaking students in Two-way Dual Language Immersion Program who took the Spanish Assessment of Basic Education (SABE) to measure their grade-level knowledge until they were proficient enough in English to take the grade-level measures in English

1999 N = 23
2000 N = 25
2001 N = 29

Figure D-3
Oregon Statewide Assessment
Cross-sectional analyses

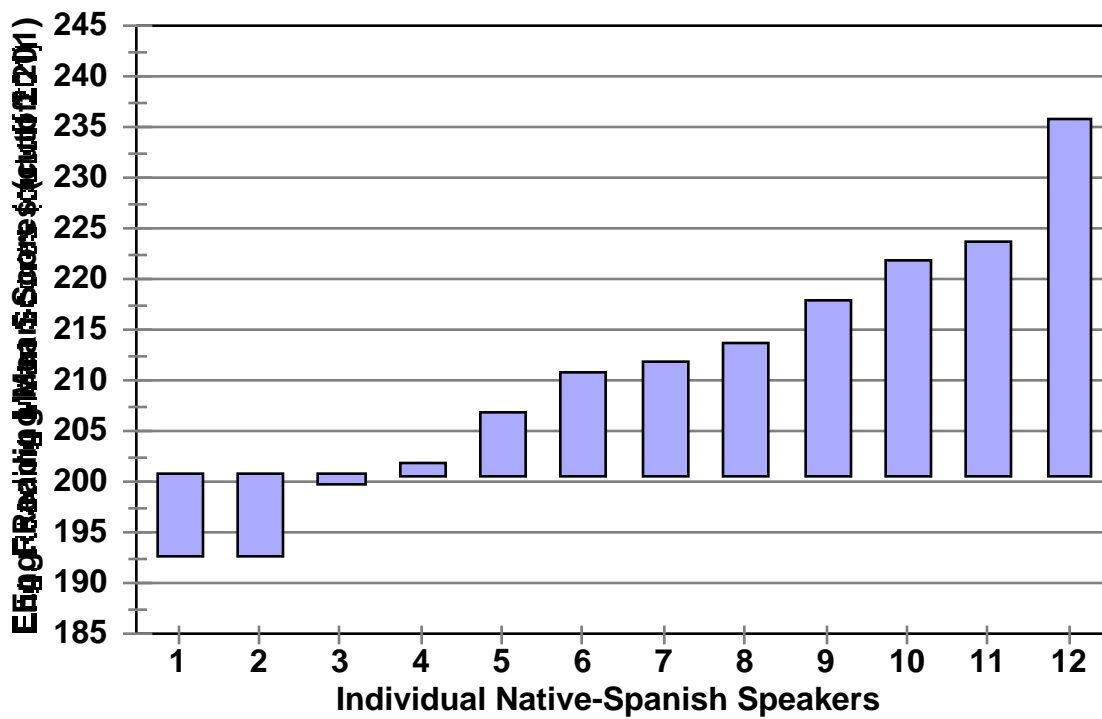
2001 Eng. Reading Mean Scores-Grade 3
Native-English Speakers on Oregon SWA



N = 30

Figure D-4
Oregon Statewide Assessment
Cross-sectional analyses

2001 Eng. Reading Mean Scores-Grade 3
Native-Spanish Speakers on Oregon SWA



N = 12

Figure D-5
Oregon Statewide Assessment
Cross-sectional analyses

N = 17

2001 Eng. Reading Mean Scores-Grade 5
Native-English Speakers on Oregon SWA

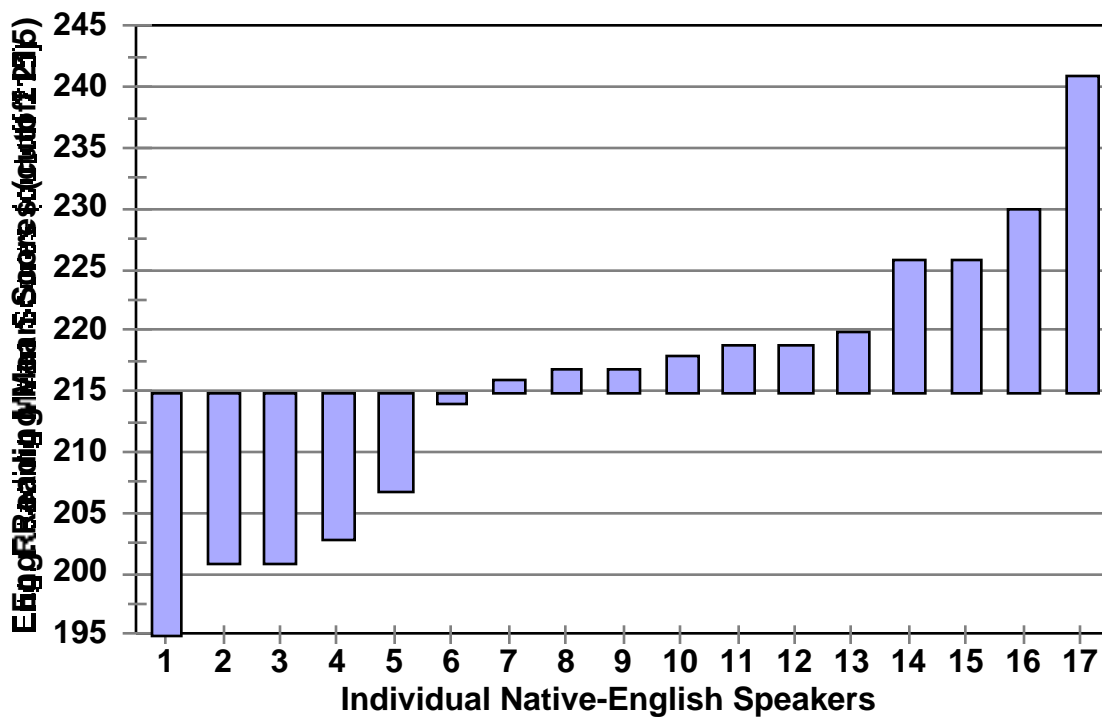
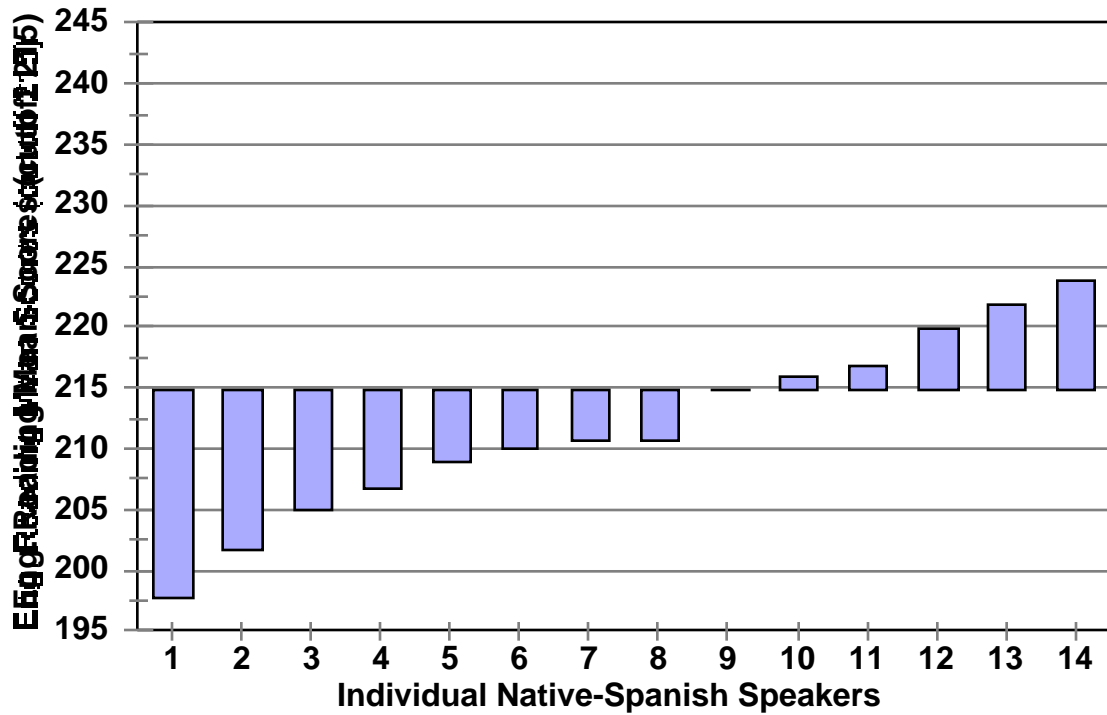


Figure D-6
Oregon Statewide Assessment
Cross-sectional analyses

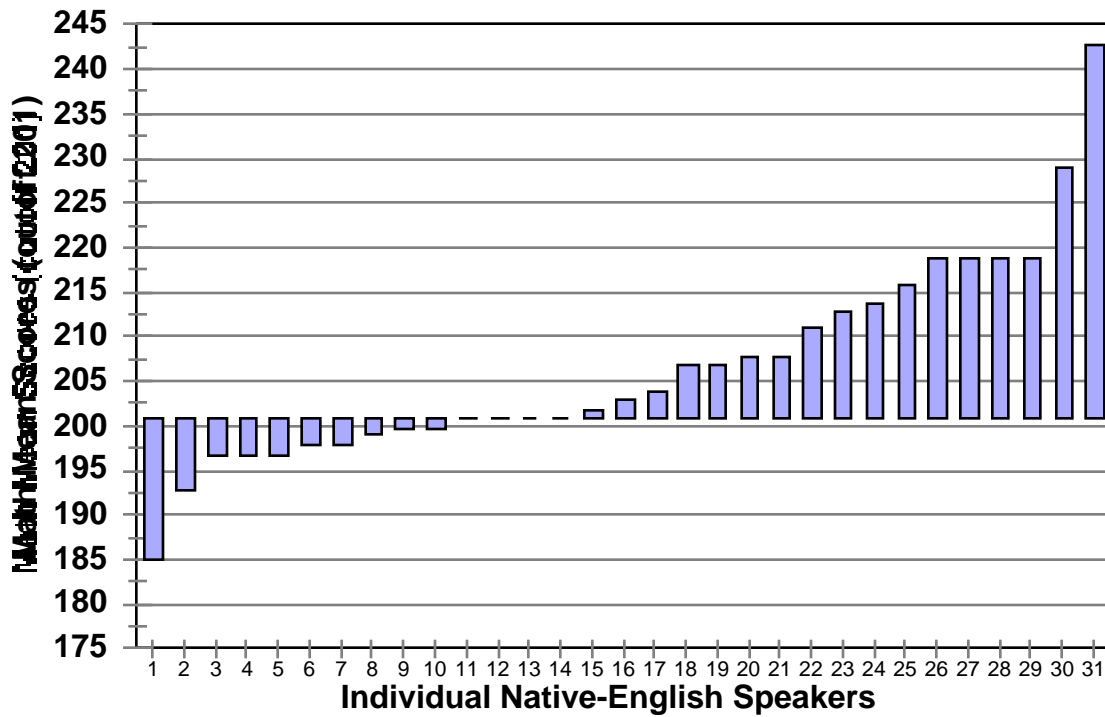
2001 Eng. Reading Mean Scores-Grade 5
Native-Spanish Speakers on Oregon SWA



N = 14

Figure D-7
Oregon Statewide Assessment
Cross-sectional analyses

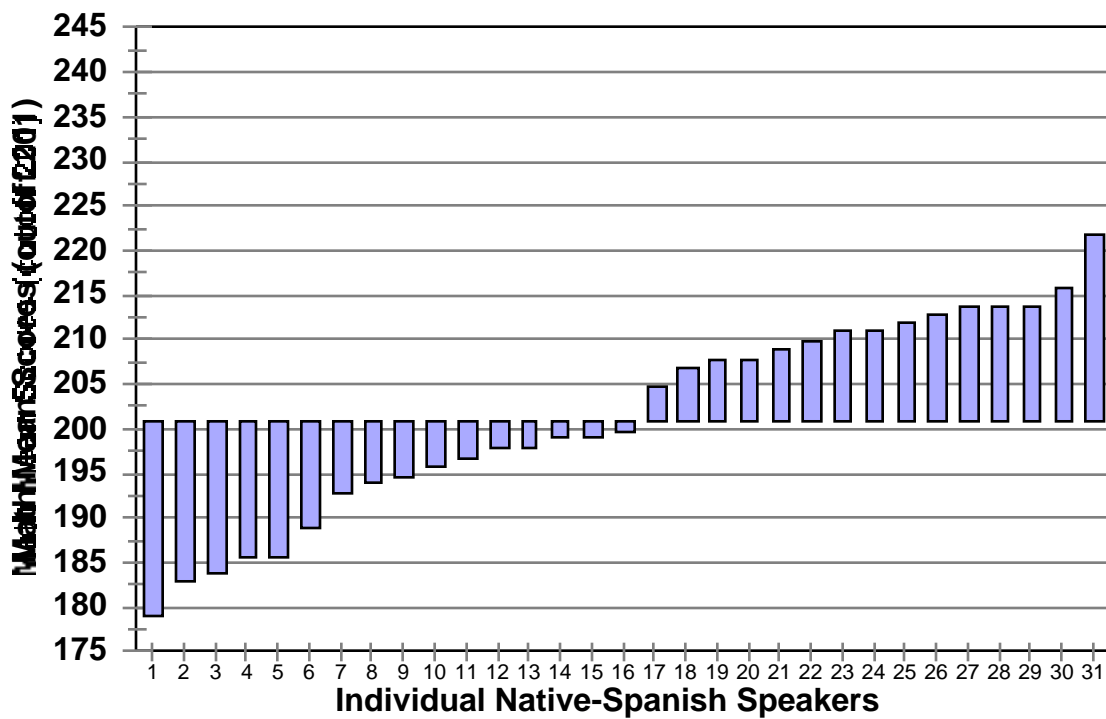
2001 Mathematics Mean Scores - Grade 3
Native-English Speakers on Oregon SWA



N = 31

Figure D-8
Oregon Statewide Assessment
Cross-sectional analyses

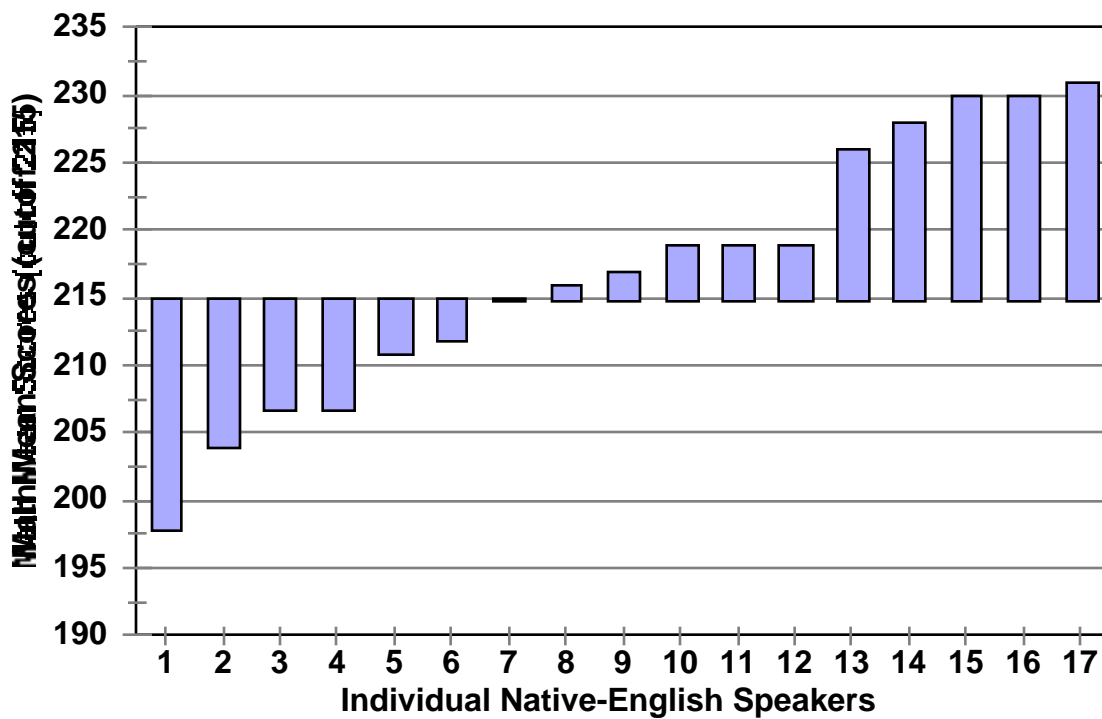
2001 Mathematics Mean Scores - Grade 3
Native-Spanish Speakers on Oregon SWA



N = 31

Figure D-9
Oregon Statewide Assessment
Cross-sectional analyses

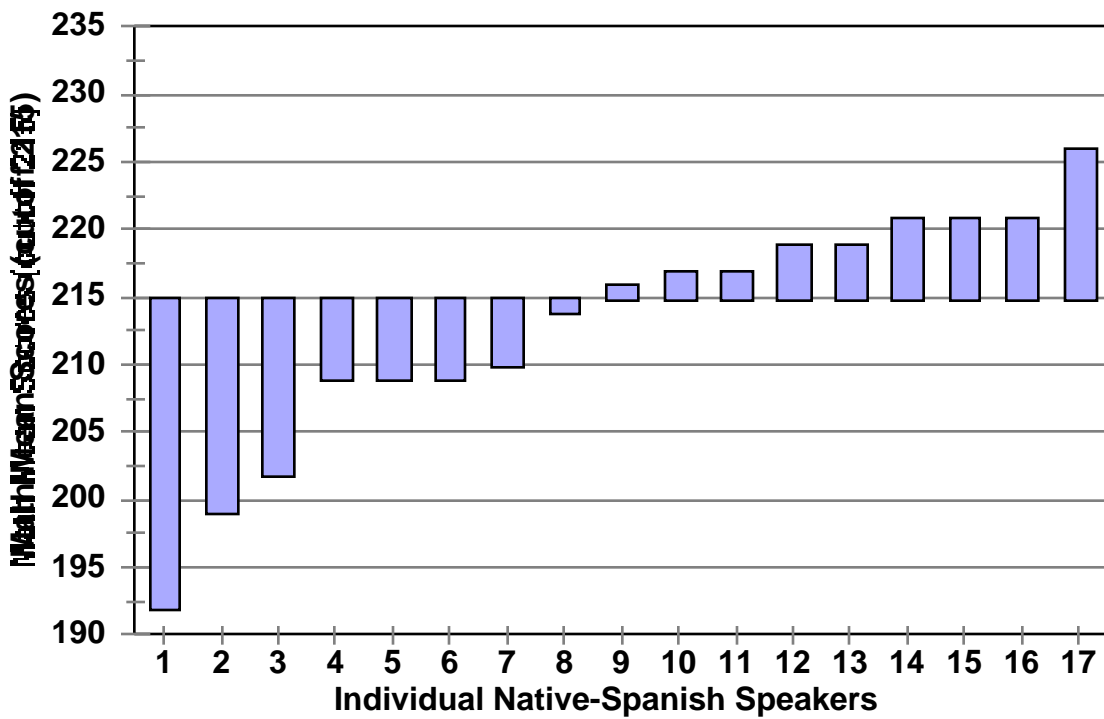
2001 Mathematics Mean Scores - Grade 5
Native-English Speakers on Oregon SWA



N = 17

Figure D-10
Oregon Statewide Assessment
Cross-sectional analyses

2001 Mathematics Mean Scores - Grade 5
Native-Spanish Speakers on Oregon SWA



N = 17